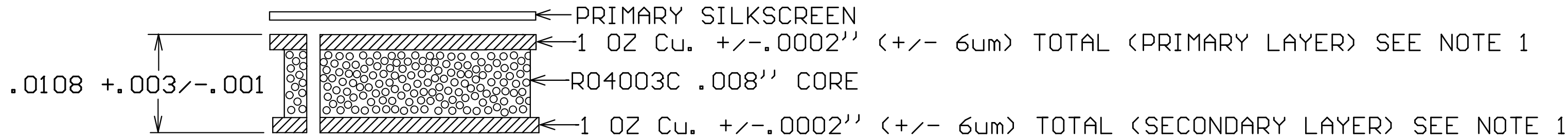
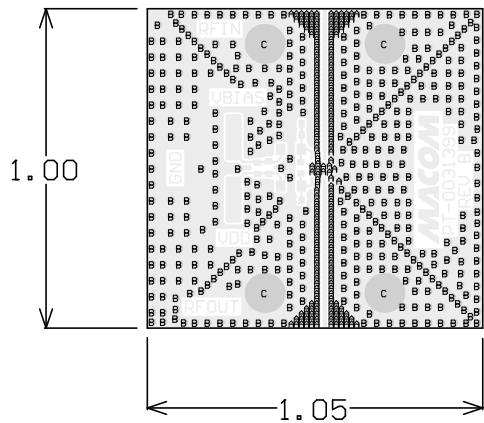


BOARD DIELECTRIC / COPPER STACKUP  
FINAL BOARD THICKNESS  
(EXCLUDING PRIMARY SILKSCREEN)



DETAIL 'A'

Symbol	Count	FHS	Tolerance	Plated	Hole Type
A	187	8.00mil	+3/-8mil	PTH	Round
B	424	13.00mil	+3/-13mil	PTH	Round
C	4	78.00mil	+/-3mil	PTH	Round
	615 Total				

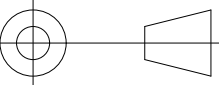


- NOTES:
- MATERIAL:  
DIELETRIC: R04003C, 8 MIL THICKNESS.  
TOTAL COPPER THICKNESS ON PRIMARY AND SECONDARY SHALL BE 1 OZ +/- .0002'' (+/- 6um).  
MATERIAL STACKUP, AND THICKNESS, PER DETAIL 'A'.
  - FINISH: PRIMARY AND SECONDARY SIDE FINISH;  
ELECTROLESS NICKEL/IMMERSION GOLD (ENIG) PER IPC-4552.  
ELECTROLESS NICKEL: 118-236 MICRO-INCHES  
IMMERSION GOLD: 2-8 MICRO-INCHES  
THERE SHALL BE NO PITS, PIN HOLES, SCRATCHES OR NODULES WITHIN EXPOSED METAL AREAS  
STACKUP REPRESENTS FINISHED THICKNESS.
  - PCB SHALL BE BUILT PER IPC-6012 CLASS 2 AND CONFORM TO IPC-A-600 CLASS 2 LATEST REVISIONS.
  - ALL HOLES TO BE PLATED THRU UNLESS OTHERWISE SPECIFIED.
  - ELECTRONIC DATA IS EQUAL TO THE FINISHED LINE WIDTH.
  - ALL FINISHED HOLE SIZES APPLY AFTER PLATING.
  - COPPER PLATING IN THROUGH HOLES WILL BE .001'' MINIMUM AVERAGE WITH AN ABSOLUTE MINIMUM OF .0007''.
  - ALL 8 AND 13 MIL FHS SHALL BE FILLED WITH NON-CONDUCTIVE VIA MATERIAL, CAPPED OVER, AND PLANARIZED FLAT.
  - DIMENSIONS SHOWN ARE FOR LOCATION OF O,O FOR THE DRILL FILE.

10. LINE WIDTH AND SPACING SHALL BE WITHIN TOLERANCE OF 1 MIL. DO NOT ADJUST LINE WIDTH AND SPACING.  
11. ELECTRONIC DATA IS EQUAL TO THE FINISHED LINE WIDTH.

- NO SOLDERMASK ON PCB.
- GROUND FILL SHALL EXTEND TO BOARD EDGES UNLESS OTHERWISE NOTED.  
EXPOSED COPPER ON BOARD EDGE SHALL BE ACCEPTABLE.
- PRIMARY SILKSCREEN SHALL BE WHITE NON-CONDUCTIVE EPOXY INK.
- VENDOR MARKING SHALL BE ACCEPTABLE AS SILKSCREEN. DO NOT ADD OVER EXPOSED TRACES OR PADS.
- ALL MATERIALS DESCRIBED IN THIS DOCUMENT/DRAWING SHALL BE IN COMPLIANCE WITH AND CONTAIN NO SUBSTANCES RESTRICTED OR REQUIRING SPECIAL RECLAMATION UNDER THE LATEST RoHS, WEEE OR ELV DIRECTIVES.

X	MAAM-011338
NEXT ASSY	USED ON
APPLICATION	

UNLESS OTHERWISE SPECIFIED INTERPRET DRAWING PER ASME Y14.5 DO NOT SCALE THIS DRAWING	UNLESS OTHERWISE SPECIFIED DIMENSIONS ARE IN INCHES		<div>MACOM</div> <div>WWW.MACOM.COM</div>			
	TOLERANCES ON					
	DECIMALS	ANGLES				
NOTE: THIS DRW INCORPORATES THIRD ANGLE PROJECTION 	.X ± .1 .XX ± .02 .XXX ± .005 .XXXX ± .0005	± 0.5	TITLE			
	MACOM Technology Solutions CONFIDENTIAL INFORMATION SUBJECT TO NDA		SAMPLE BOARD MAAM-011338			
The information contained in this document or material is the valuable and confidential property of MACOM Technology Solutions Holdings, Inc. and/or its subsidiaries or affiliates (collectively MACOM), provided to you subject to a non-disclosure agreement between you and MACOM solely for use in supporting MACOM's business as and to the extent MACOM authorizes in writing from time to time. This information shall be held in strictest confidence and shall not be reproduced, published, disclosed to others, or used for any purpose except as and to the extent specifically authorized by MACOM in a separate written agreement. If permission is granted for reproduction, this legend must be included in any and all copies. This document or material shall be promptly returned to MACOM or destroyed upon request, completion of the use for which it was made available to recipient, or termination of MACOM's relationship with recipient, whichever first occurs.			UNLESS OTHERWISE SPECIFIED 63 ALL OVER		REVISION	
			MATERIAL	SIZE		DRAWING NO.
			SEE NOTE 1	B		PT-0031399
FINISH			SCALE:	PACKAGE TYPE:	SHEET 1 OF 1	
SEE NOTE 2			1:1	2mmQFN50P-8LD		